

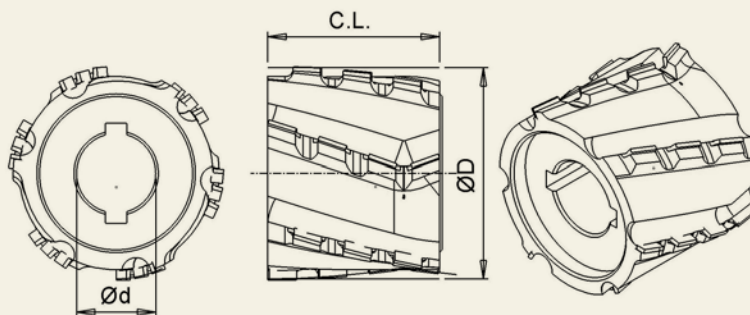
**PCD** JOINTING/RABBETING CUTTERS

FOR JOINTING LAMINATED PANEL MATERIALS

R.H. No.	L.H. No.	Cutting Dia.	Cutting	Bore Dia.	Z	Key Size	Design
		mm	Length mm	mm			
JCA-080X34R3	JCA-080X34L3	80	34	30	3+3	2 (8x3)	Asymmetric
JSA-080X48R3	JSA-080X48L3	80	48	30	3+3	2 (8x3)	Asymmetric
JSA-080X65R3	JSA-080X65L3	80	65	30	3+3	2 (8x3)	Asymmetric
JCA-100X34R3	JCA-100X34L3	100	34	30	3+3	2 (8x3)	Asymmetric
JCA-100X48R3	JCA-100X48L3	100	48	30	3+3	2 (8x3)	Asymmetric
JCA-100X65R3	JCA-100X65L3	100	63	30	3+3	2 (8x3)	Asymmetric
JCA-125X34R3	JCA-125X34L3	125	34	30	3+3	2 (8x3)	Asymmetric
JCA125X48R3	JCA125X48L3	125	48	30	3+3	2 (8x3)	Asymmetric
JCA-125X65R3	JCA-125X65L3	125	63	30	3+3	2 (8x3)	Asymmetric
JCA-125X34R4	JCA-125X34L4	125	34	30	4+4	2 (8x3)	Asymmetric
JCA125X48R4	JCA125X48L4	125	48	30	4+4	2 (8x3)	Asymmetric
JCA-125X65R4	JCA-125X65L4	125	63	30	4+4	2 (8x3)	Asymmetric
JCA-180X65R4	JCA-180X65L4	180	65	35	4+4	2 (10X4)	Asymmetric
JCA-200X65R6	JCA-200X65L6	200	65	35	6+6	2 (10X4)	Asymmetric

\* ADDITIONAL DESIGNS AVAILABLE ON REQUEST

**ASYMMETRIC** →



**WORKPIECE MATERIAL**  
Melamine and Paper laminated  
HPL coated and veneered.