

Our new generation of extended life Dnamic™ carbide straight bits.

Many years of research have led DIMAR to come out with a new line of straight router bits – the Dnamic. The objective was to give a solution for abrasive materials that dull the tools.

Special carbide was developed for this purpose along with geometric changes in the tools. These were produced in modern CNC machines and in a grinding of superior quality in automatic machines that transform the Dnamic into the very best straight tool.

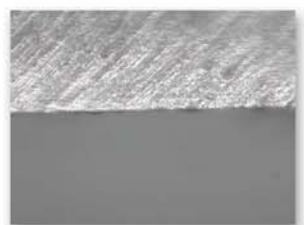
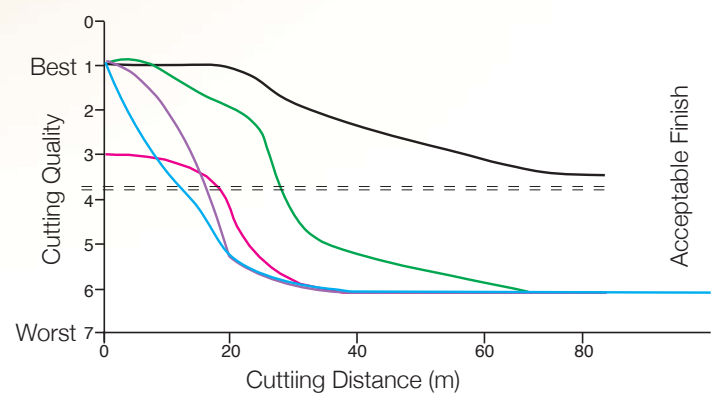
The new Dnamic router bit is compared to a leading competitor at a magnification of x 90 - it is possible to see the difference in the manufactured quality.

Under laboratory conditions the two router bits were tested cutting an abrasive double sided melamine in a thickness of 17mm. After both tools had cut a distance of 70 meters, the wear of the router bits were compared against each other at a magnification of x 20. The new Dnamic router had only worn by 0.07mm, whereas the nearest competitor's router bit had worn by 0.15mm.

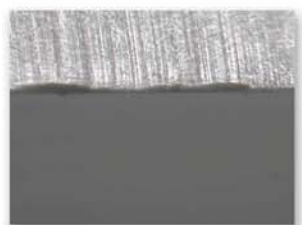
Both tests provide clear evidence of the superior cutting ability of our new Dnamic router bits.

We tested and compared the new Dnamic router bits against four other manufacturers. The results are shown in the graph.

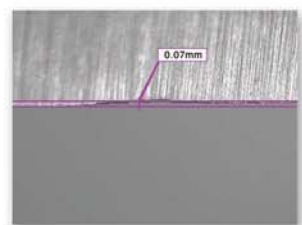
- Dimar
- Competitor B
- Competitor C
- Competitor D
- Competitor E



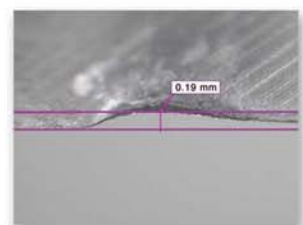
DYNAMIC™



Competition



DYNAMIC™

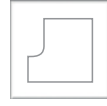


Competition

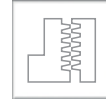
Routing



Grooving & Sizing



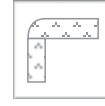
Profiling & Chamfering



Jointing & Rebating



Carving

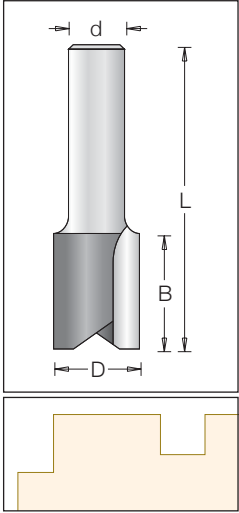


Corian

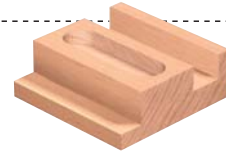


Index

Straight Bit



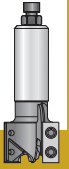
øD	B	Code No.	L	ød
4.0	11	107 004 9 *	63	12
5.0	11	107 007 9 *	60	12
6.0	19	107 010 9 *	64	12
7.0	19	107 016 9	63	12
8.0	19	107 022 9	63	12
	25	107 025 9	69	12
10.0	19	107 028 9	63	12
	25	107 031 9	69	12
	32	107 034 9	76	12
12.0	25	107 046 9	66	12
	32	107 049 9	73	12
	38	107 052 9	79	12
13.5	51	107 055 9	108	12
	32	107 057 9	73	12
14.0	25	107 061 9	66	12
15.0	19	107 065 9	60	12
	25	107 064 9	66	12
	25	107 070 9	66	12
16.0	32	107 073 9	73	12
	38	107 076 9	79	12
	32	107 077 9	73	12
16.7	32	107 077 9	73	12
17.0	32	107 075 9	73	12
	25	107 084 9	66	12
18.0	32	107 085 9	73	12
	51	107 082 9	92	12
	25	107 091 9	66	12
19.0	32	107 094 9	73	12
	38	107 097 9	79	12
19.8	32	107 099 9	73	12
	25	107 103 9	66	12
20.0	32	107 106 9	73	12
	51	107 098 9	92	12
22.0	25	107 112 9	66	12
	32	107 115 9	73	12
	51	107 120 9	92	12
24.0	19	107 119 9	60	12
	25	107 121 9	66	12
25.0	32	107 124 9	73	12
	38	107 127 9	79	12
26.0	25	107 132 9	66	12
27.0	32	107 128 9	73	12
28.0	25	107 134 9	66	12
28.6	32	107 129 9	73	12
30.0	25	107 130 9	66	12
	32	107 133 9	73	12
35.0	25	107 136 9	66	12
	32	107 139 9	73	12
40.0	25	107 142 9	66	12
	32	107 145 9	73	12
51.0	32	107 195 9	73	12



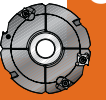
Sawing



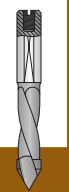
CNC



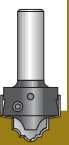
Cutting



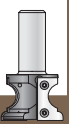
Drilling



Routing



Custom Tooling



* Solid Carbide
Can be supplied with 1/2" shank.



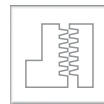
Routing



Grooving & Sizing



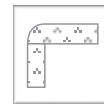
Profiling & Chamfering



Jointing & Rebating

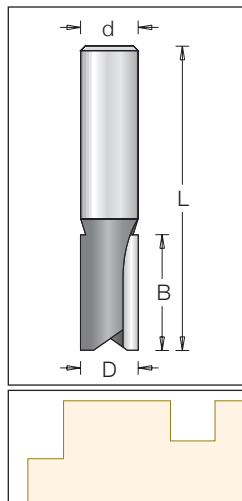


Carving

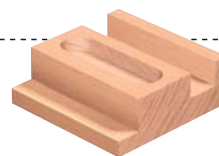


Corian

Straight Bit



øD	B	Code No.	L	ød
6.3	12.7	107 509 9 *	57.0	12
	19.0	107 510 9 *	63.5	12
6.3	25.4	107 513 9	70.0	12
	19.0	107 522 9	63.5	12
8.0	25.4	107 525 9	70.0	12
	19.0	107 528 9	63.5	12
9.5	25.4	107 531 9	70.0	12
	31.7	107 534 9	76.2	12
11.1	25.4	107 540 9	70.0	12
	31.7	107 542 9	76.2	12
12.7	25.4	107 546 9	66.7	12
	31.7	107 549 9	73.0	12
	31.7	L107 549 9	81.0	12
	38.0	107 582 9	79.0	12
14.2	50.8	107 583 9	108.0	12
	63.5	107 584 9	114.3	12
	25.4	107 552 9	66.7	12
14.2	31.7	107 585 9	73.0	12
	25.4	107 558 9	66.7	12
15.8	31.7	107 588 9	73.0	12
	38.0	107 591 9	79.3	12
	50.8	107 592 9	92.0	12
17.4	25.4	107 593 9	66.7	12
	31.7	107 594 9	73.0	12
19.0	25.4	107 597 9	66.7	12
	31.7	107 600 9	73.0	12
	38.0	107 603 9	79.3	12
19.8	50.8	107 604 9	92.0	12
	31.7	107 566 9	73.0	12
20.6	25.4	107 606 9	66.7	12
	31.7	107 609 9	73.0	12
22.2	25.4	107 612 9	66.7	12
	31.7	107 615 9	73.0	12
	25.4	107 618 9	66.7	12
25.4	31.7	107 621 9	73.0	12
	38.0	107 624 9	79.3	12
	50.8	107 625 9	92.0	12
31.7	25.4	107 627 9	66.7	12
	31.7	107 630 9	73.0	12
35.0	25.4	107 633 9	66.7	12
	31.7	107 636 9	73.0	12
38.0	25.4	107 637 9	66.7	12
	31.7	107 639 9	73.0	12
42.1	25.4	107 642 9	66.7	12
	31.7	107 642 9	73.0	12
44.4	31.7	107 645 9	73.0	12
47.6	31.7	107 648 9	73.0	12
50.8	31.7	107 649 9	73.0	12



⚠ * Solid Carbide
Can be supplied with 1/2" shank.

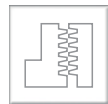
Routing



Grooving & Sizing



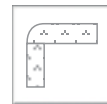
Profiling & Chamfering



Jointing & Rebating



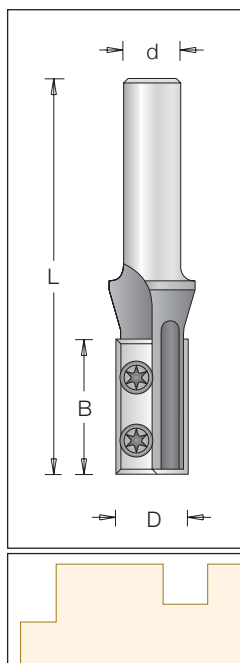
Carving



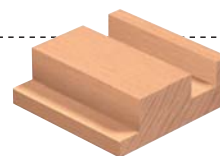
Corian



Straight Bit



øD	B	Code No.	L	ød
14	30	107 311 9 *	86	12
15	30	107 313 9	86	12
16	30	107 312 9	88	12



⚠ Can be supplied with 1/2" shank.

Spare Parts:



T.C. Blade
#310 793 0
30x9x1.5



Torx screw
#193 354 8
M3.5x4.8



Torx screw *
#193 364 8
M3.5x4.8



Torx key
#194 101 5
T15

øD	B	Code No.	L	ød
18	30	107 316 9	88	12
20	30	107 320 9	88	12
22	30	107 324 9	88	12
25	30	107 329 9	88	12

⚠ Can be supplied with 1/2" shank.

Spare Parts:



T.C. Blade
#310 723 0
30x12x1.5

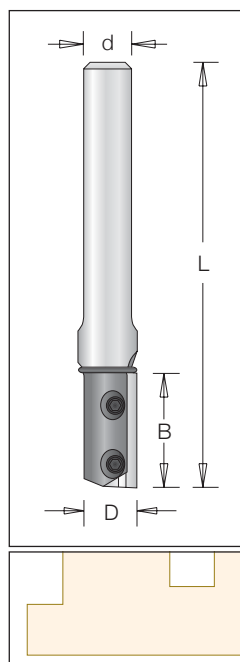


Torx screw
#193 148 2
M4x5.6

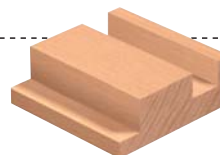


Torx key
#194 101 5
T15

Straight Bit



øD	B	Code No.	L	ød	T
10	20	807 1059	71	12	1
12	30	807 1119 *	81	12	2



⚠ Can be supplied with 1/2" shank.

Spare Parts:



T.C. Blade
310 751 0
20x5.5x1.1



T.C. Blade *
310 751 1
30x5.5x1.1



Allen screw
193 035 0
M3x4



Allen screw *
193 036 0
M3x5



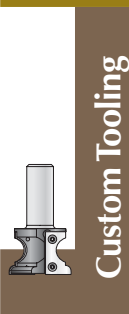
Washers
196 205 0
7.0x1



Washers *
196 207 0
9.5x1



Allen key
194 102 0
S1.5

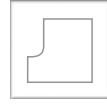




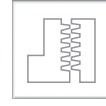
Routing



Grooving & Sizing



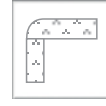
Profiling & Chamfering



Jointing & Rebating

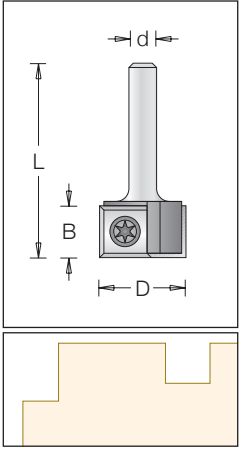


Carving

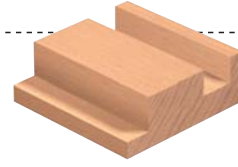


Corian

Flush Trimming Bit



øD	B	Code No.	L	ød
18	12	107 301 3	44	6
	12	107 301 5	44	8
	12	107 301 9	50	12
20	12	107 302 3	44	6
	12	107 302 5	45	8
	12	107 302 9	50	12
22	12	107 303 3	44	6
	12	107 303 5	44	8
	12	107 303 9	50	12



⚠ 6mm shank can be supplied with 1/4" shank.
12mm shank can be supplied with 1/2" shank.

Spare Parts:



T.C. Blade
#310 121 2
12x12x1.5



Torx screw
#193 148 2
M4x5.6

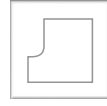


Torx key
#194 101 5
T15

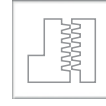
Routing



Grooving & Sizing



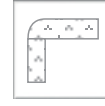
Profiling & Chamfering



Jointing & Rebating



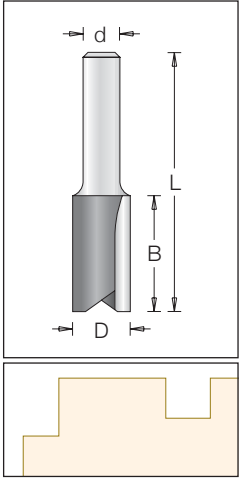
Carving



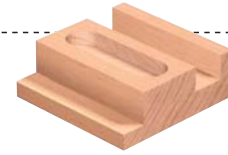
Corian



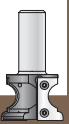
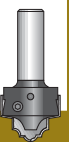
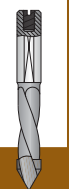
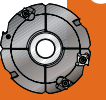
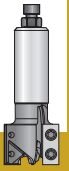
Straight Bit



øD	B	Code No.	L	ød
3	11	107 001 5 *	51	8
4	11	107 004 5 *	51	8
5	11	107 007 5 *	51	8
6	19	107 010 5 *	57	8
	25	107 013 5	63	8
7	19	107 016 5	57	8
	19	107 022 5	57	8
8	25	107 025 5	63	8
	25	L107 025 5	80	8
	19	107 028 5	51	8
10	25	107 031 5	57	8
	32	107 034 5	64	8
	32	L107 034 5	80	8
11	19	107 037 5	51	8
	25	107 040 5	57	8
12	19	107 043 5	51	8
	25	107 046 5	57	8
	32	107 049 5	64	8
	32	L107 049 5	80	8
13	19	107 056 5	51	8
	19	107 058 5	51	8
14	19	L107 058 5	70	8
	25	107 061 5	57	8
15	19	107 065 5	51	8
	19	107 067 5	51	8
16	25	107 070 5	57	8
	25	L107 070 5	85	8
18	19	107 079 5	51	8
	19	L107 079 5	70	8
19	19	107 088 5	51	8
20	19	107 100 5	51	8
	19	L107 100 5	70	8
22	19	107 109 5	51	8
	19	L107 109 5	70	8
24	19	107 119 5	51	8
25	19	107 118 5	51	8
26	19	107 131 5	51	8
28	19	107 126 5	51	8



⚠ * Solid Carbide

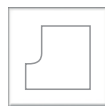




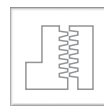
Routing



Grooving & Sizing



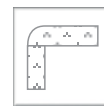
Profiling & Chamfering



Jointing & Rebating

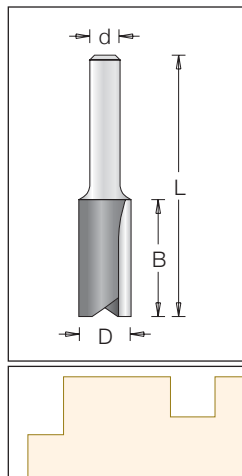


Carving

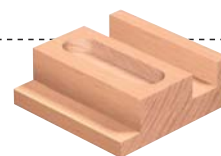


Corian

Straight Bit



øD	B	Code No.	L	ød
1.3	4.5	107 833 3 *	47	6
1.5	4.5	107 834 3 *	47	6
2.0	6.5	107 835 3 *	47	6
2.5	8.0	107 012 3 *	48	6
3.0	8.0	107 801 3 *	41	6
	8.0	107 802 3 *	55	6
	11.0	107 001 3 *	51	6
4.0	11.0	X107 001 3 *	60	6
	11.0	107 004 3 *	51	6
5.0	11.0	X107 004 3 *	60	6
	16.0	107 007 3 *	51	6
6.0	16.0	107 008 3 *	56	6
	19.0	107 010 3	48	6
6.5	19.0	107 011 3	51	6
	25.0	107 013 3	57	6
7.0	19.0	107 014 3	51	6
	25.0	107 017 3	57	6
7.0	19.0	107 016 3	51	6
	25.0	107 019 3	57	6
8.0	19.0	107 022 3	51	6
	25.0	L107 022 3	65	6
8.5	19.0	107 025 3	57	6
	19.0	107 026 3	51	6
9.0	19.0	107 027 3	51	6
	19.0	107 028 3	51	6
10.0	25.0	107 031 3	57	6
	32.0	107 034 3	64	6
10.3	19.0	107 035 3	51	6
	19.0	107 037 3	51	6
11.0	25.0	107 040 3	57	6
	19.0	107 041 3	51	6
11.3	19.0	107 043 3	51	6
	19.0	107 046 3	51	6
12.0	25.0	107 049 3	57	6
	32.0	107 056 3	64	6
13.0	19.0	107 054 3	51	6
	25.0	107 042 3	57	6
14.0	32.0	107 042 3	64	6
	19.0	107 058 3	51	6
14.5	19.0	107 059 3	51	6
	19.0	107 065 3	51	6
15.0	25.0	107 064 3	57	6
	32.0	107 066 3	64	6
16.0	19.0	107 067 3	51	6
	25.0	107 070 3	57	6
16.0	32.0	107 072 3	64	6
	17.0	107 078 3	51	6
18.0	19.0	107 079 3	51	6
18.2	19.0	107 086 3	51	6
19.0	19.0	107 088 3	51	6
	25.0	107 089 3	57	6
20.0	16.0	107 099 3	48	6
	19.0	107 100 3	51	6
20.2	19.0	107 107 3	51	6
21.0	19.0	107 108 3	51	6
22.0	19.0	107 109 3	51	6
25.0	19.0	107 118 3	51	6



⚠ * Solid Carbide



Index

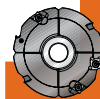
Sawing



CNC



Cutting



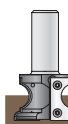
Drilling



Routing



Custom Tooling



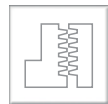
Routing



Grooving & Sizing



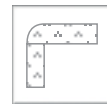
Profiling & Chamfering



Jointing & Rebating



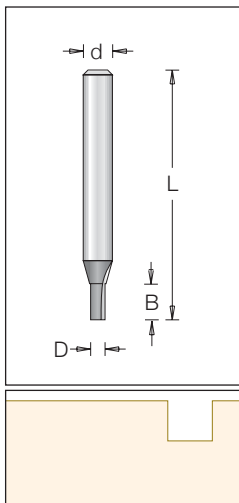
Carving



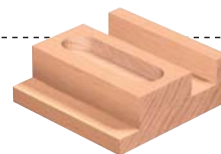
Corian



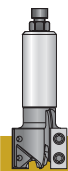
Straight Bit



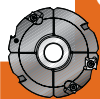
øD	B	Code No.	L	ød
2.4	6.3	107 500 3 *	30.1	6
3.1	11.1	107 501 3 *	50.8	6
4.0	11.1	107 504 3 *	50.8	6
4.7	11.1	107 507 3 *	50.8	6
	15.8	107 506 3 *	55.5	6
5.5	19.0	107 505 3	50.8	6
	12.7	107 509 3	50.8	6
	15.8	107 520 3	47.6	6
6.3	19.0	107 510 3	50.8	6
	25.4	107 513 3	57.0	6
	25.4	107 514 3	73.0	6
7.1	19.0	107 516 3	50.8	6
	25.4	107 519 3	57.0	6
	19.0	107 522 3	50.8	6
8.0	25.4	107 525 3	57.0	6
	25.4	L107 525 3	70.0	6
	19.0	107 528 3	50.8	6
9.5	25.4	107 531 3	57.0	6
	31.7	107 534 3	63.5	6
11.0	19.0	107 537 3	50.8	6
	25.4	107 540 3	57.0	6
	19.0	107 543 3	50.8	6
12.7	25.4	107 546 3	57.0	6
	31.7	107 549 3	63.5	6
14.2	19.0	107 551 3	50.7	6
	25.4	107 552 3	57.0	6
15.8	19.0	107 555 3	50.8	6
	25.4	107 558 3	57.0	6
17.5	19.0	107 561 3	50.8	6
	25.4	107 562 3	57.0	6
19.0	19.0	107 564 3	50.8	6
	25.4	107 565 3	57.0	6
20.6	19.0	107 567 3	50.8	6
22.2	19.0	107 570 3	50.8	6
25.4	19.0	107 573 3	50.8	6



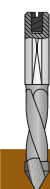
Sawing



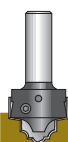
CNC



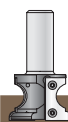
Cutting



Drilling



Routing



Custom Tooling



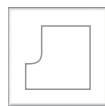
* Solid Carbide.
Can be supplied with 1/4" shank.



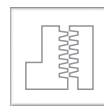
Routing



Grooving & Sizing



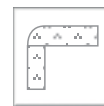
Profiling & Chamfering



Jointing & Rebating

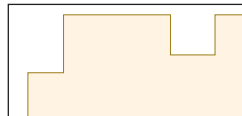
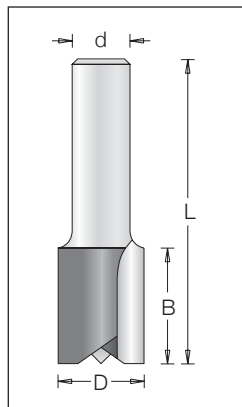


Carving

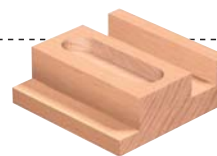


Corian

Straight Bit - with Center Tip

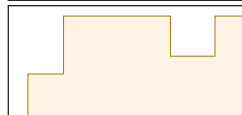
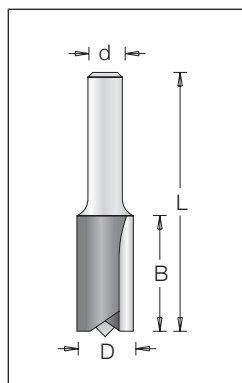


øD	B	Code No.	L	ød
8	19	107 722 9	63	12
10	19	107 728 9	63	12
12	25	107 746 9	67	12
	38	107 752 9	79	12
14	51	107 755 9	108	12
	19	107 758 9	61	12
15	25	107 761 9	67	12
	25	107 764 9	67	12
16	19	107 767 9	61	12
	25	107 770 9	67	12
	32	107 773 9	73	12
17	38	107 776 9	79	12
	25	107 778 9	65	12
18	25	107 784 9	67	12
19	25	107 789 9	67	12
20	25	107 703 9	67	12
22	32	107 715 9	73	12



⚠ Can be supplied with 1/2" shank.

Straight Bit - with Center Tip

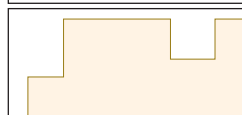
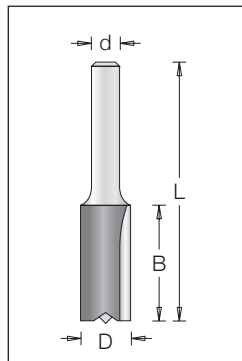


øD	B	Code No.	L	ød
8	19	107 722 5	57	8
10	19	107 728 5	51	8
12	19	107 743 5	51	8
	25	107 746 5	57	8
14	32	107 749 5	63	8
	19	107 758 5	51	8
16	25	107 761 5	57	8
	19	107 767 5	51	8
18	25	107 770 5	57	8
	19	107 779 5	51	8
19	25	107 784 5	57	8
	25	107 789 5	57	8
20	19	107 700 5	51	8

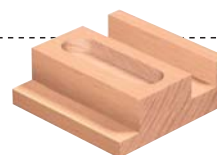


⚠ Can be supplied with 1/4" shank.

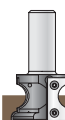
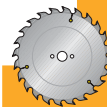
Straight Bit with Center Tip



øD	B	Code No.	L	ød
8.0	19.0	107 422 3	50.8	6
	19.0	107 428 3	50.8	6
9.5	25.4	107 431 3	57.0	6
	31.7	107 434 3	63.5	6
12.7	19.0	107 443 3	50.8	6
	25.4	107 445 3	66.0	6
15.8	25.4	107 446 3	54.0	6
	19.0	107 455 3	50.8	6
22.2	19.0	107 470 3	50.8	6
25.4	19.0	107 473 3	50.8	6



⚠ Can be supplied with 1/4" shank.



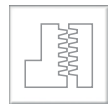
Routing



Grooving & Sizing



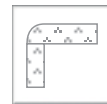
Profiling & Chamfering



Jointing & Rebating



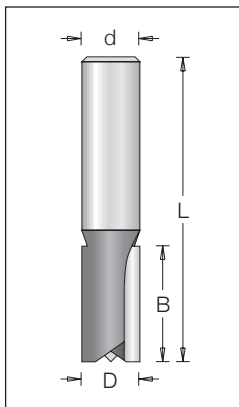
Carving



Corian



Straight Bit with Center Tip

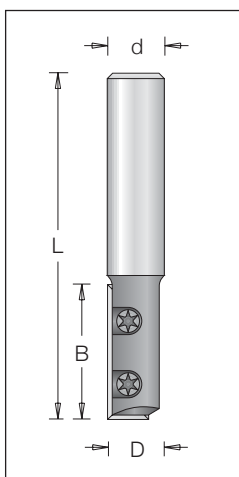


øD	B	Code No.	L	ød
8.0	19.0	107 422 9	63.5	12
9.5	31.7	107 434 9	76.2	12
11.0	25.4	107 440 9	70.0	12
12.7	25.4	107 446 9	66.7	12
	31.7	107 449 9	73.0	12
	38.0	107 482 9	79.3	12
16.0	50.8	107 483 9	108.0	12
	31.8	107 488 9	73.0	12
19.0	50.8	107 492 9	95.0	12
	25.4	107 465 9	67.0	12
22.2	31.8	107 415 9	73.0	12
25.4	25.4	107 418 9	67.0	12
41.3	25.4	107 739 9	67.0	12
44.5	31.8	107 745 9	73.0	12
47.6	31.8	107 748 9	73.0	12



⚠ Can be supplied with 1/2" shank.

Straight and Plunge Bit



øD	B	Code No.	L	ød
12	30	107 350 9	77	12
14	30	107 354 9	77	12
15	30	107 355 9	77	12



⚠ Can be supplied with 1/2" shank.

Spare Parts:



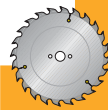
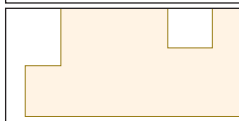
T.C. Blade
#310 793 0
9x30x1.5



Torx screw
#193 354 8
M3.5x0.6



Torx key
#194 101 5
T15



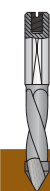
Sawing



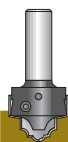
CNC



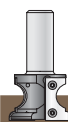
Cutting



Drilling



Routing



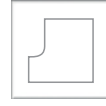
Custom Tooling



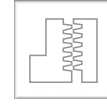
Routing



Grooving & Sizing



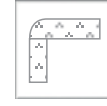
Profiling & Chamfering



Jointing & Rebating

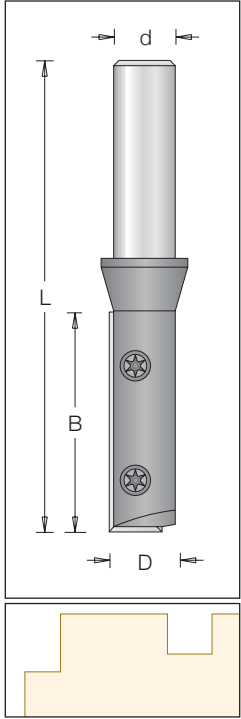


Carving



Corian

Straight and Plunge Bit



øD	B	Code No.	L	ød
16	50	107 360 9	107	12
18	50	107 364 9	107	12
20	50	107 368 9	107	12
22	50	107 372 9	107	12



⚠ Can be supplied with 1/2" shank.

Spare Parts:



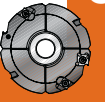
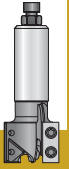
T.C. Blade
#310 725 0
50x12x1.5



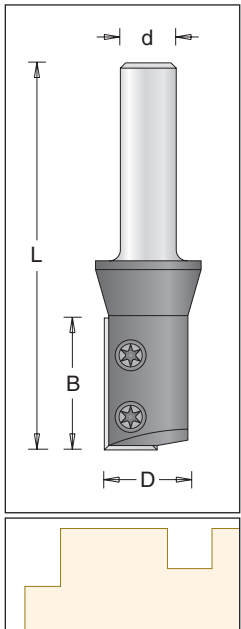
Torx screw
#193 354 8
M3.5x4.8



Torx key
#194 101 5
T15



Straight and Plunge Bit



øD	B	Code No.	L	ød
16.0	30.0	107 358 9	88	12
18.0	30.0	107 362 9	88	12
20.0	30.0	107 366 9	88	12
22.0	30.0	107 370 9	88	12
15.9	30.0	107 382 9	88	12



⚠ Can be supplied with 1/2" shank.

Spare Parts:



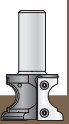
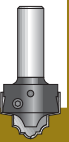
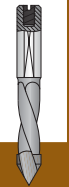
T.C. Blade
#310 723 0
30x12x1.5



Torx screw
#193 354 8
M3.5x4.8



Torx key
#194 101 5
T15



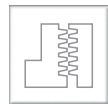
Routing



Grooving & Sizing



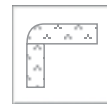
Profiling & Chamfering



Jointing & Rebating



Carving

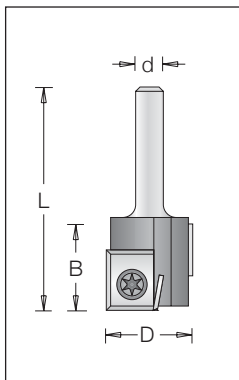


Corian



Index

Staggered Straight & Plunge Bit



øD	B	Code No.	L	ød
18	20	107 306 3	52	6
	20	107 306 5	52	8
	20	107 306 9	60	12
20	20	107 307 3	52	6
	20	107 307 5	52	8
	20	107 307 9	60	12
22	20	107 308 3	52	6
	20	107 308 5	52	8
	20	107 308 9	60	12



⚠ 6mm shank can be supplied with 1/4" shank.
12mm shank can be supplied with 1/2" shank.

Spare Parts:



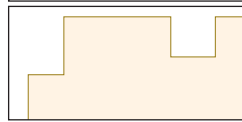
T.C. Blade
#310 121 2
12x12x1.5



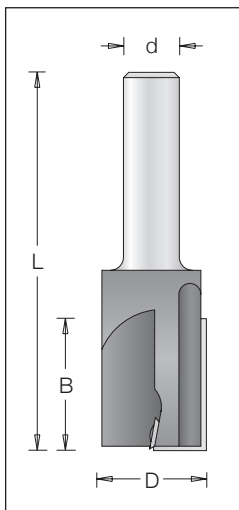
Torx screw
#193 148 2
M4x5.6



Torx key
#194 101 5
T15



Straight and Plunge Bit



øD	B	Code No.	L	ød
25	30	107 378 9	86	12

⚠ Can be supplied with 1/2" shank.

Spare Parts:



T.C. Blade
#310 723 0
30x12x1.5



T.C. Blade
#310 751 2
7.5x12x1.5



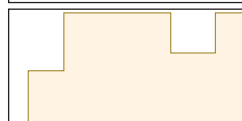
Torx screw
#193 148 1
M4x5.6



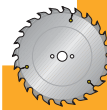
Torx screw
#193 148 2
M4x5.6



Torx key
#194 101 5
T15



Sawing



CNC



Cutting



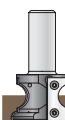
Drilling



Routing



Custom Tooling

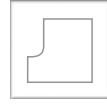




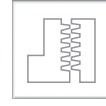
Routing



Grooving & Sizing



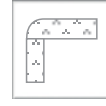
Profiling & Chamfering



Jointing & Rebating



Carving

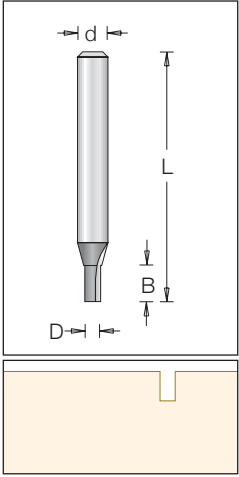


Corian

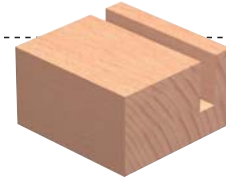


Index

Solid Carbide Straight Bit

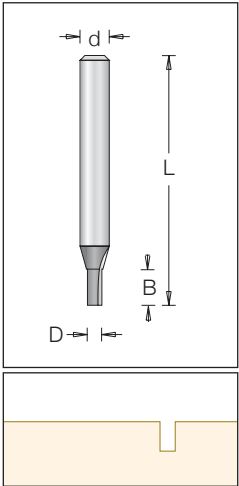


øD	B	Code No.	L	ød
4.0	11.1	so 107 504 4	50.8	6.35
4.7	11.1	so 107 507 4	50.8	6.35
	12.7	so 107 836 4	50.8	6.35
6.3	12.7	so 107 509 4	50.8	6.35
	19.0	so 107 505 4	50.8	6.35
5.5	19.0	so 107 510 4	50.8	6.35
	19.0	soL 107 510 4	63.5	6.35
6.3	19.0	soL 107 513 4	76.0	6.35

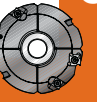
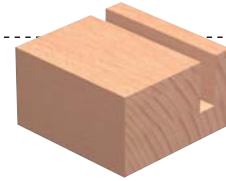


Sawing

Solid Carbide Straight Bit

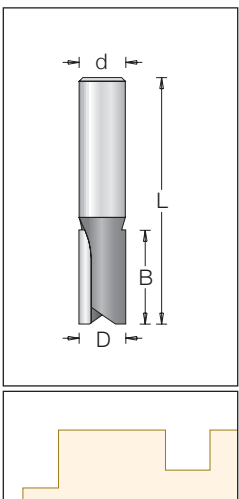


øD	B	Code No.	L	ød
3	11	so 107 001 3	60	6
4	11	so 107 004 3	60	6
5	11	so 107 007 3	60	6
	19	so 107 010 3	60	6
6	25	so 107 013 3	60	6

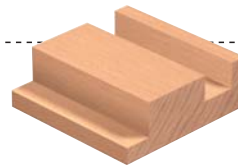


Cutting

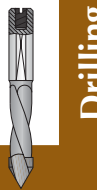
Straight Bit - Left Hand Rotation



øD	B	Code No.	L	ød
8.0	25.0	107 525 9L	70.0	12
9.5	25.0	107 531 9L	70.0	12
	31.7	107 549 9L	73.0	12
12.7	38.1	107 582 9L	79.3	12
	50.8	107 583 9L	108.0	12
19.0	31.7	107 600 9L	73.0	12
	50.8	107 604 9L	92.0	12



Can be supplied with 1/2" shank.



Drilling



Routing

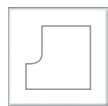


Custom Tooling

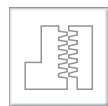
Routing



Grooving & Sizing



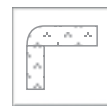
Profiling & Chamfering



Jointing & Rebating



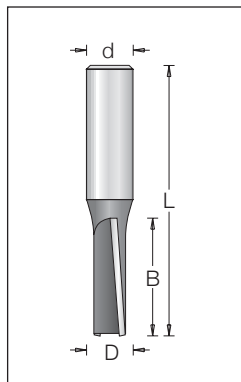
Carving



Corian



Straight Bit - Shear Angle



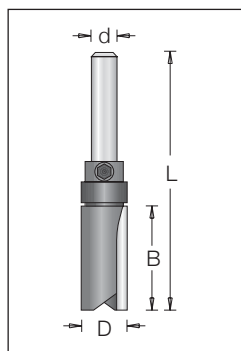
øD	B	Code No.	L	ød
9.5	25.4	107 531 3S	54.0	6
	25.4	107 531 9S	70.0	12
	31.8	107 549 9S	73.0	12
12.7	38.0	107 582 9S	79.0	12
	50.8	107 583 9S	107.5	12

⚠ 6mm shank can be supplied with 1/4" shank.
12mm shank can be supplied with 1/2" shank.



Sawing

Straight Bit - Template Profile



øD	B	Code No.	L	ød	Ball Bearing
6.3	12.7	1072 40 3	51	6.0	A
12.7	25.4	1072 46 3	63	6.0	A
12.7	32.0	1072 48 3	69	6.0	A
15.9	25.4	1072 58 3	63	6.0	B
19.1	25.4	1072 66 3	63	6.0	C
19.1	25.4	1072 97 9	77	12.0	D
19.1	50.8	1072 04 9	92	12.0	D
25.4	44.5	1072 22 9	95	12.0	G
26.0	25.4	1072 74 6	73	9.5	E
28.6	38.1	1072 39 9	92	12.0	F
31.8	44.5	1072 37 9	98	12.0	H

⚠ 6mm shank can be supplied with 1/4" shank.
12mm shank can be supplied with 1/2" shank.

Spare Parts:



A. Ball Bearing
#191 003 0
1/4x1/2 x3/16



B. Ball Bearing
#191 005 0
1/4x5/8x5.0



C. Ball Bearing
#191 014 0
1/4x3/4x9/32



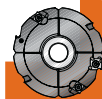
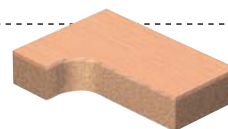
D. Ball Bearing
#191 020 0
1/2x3/4x5/32

E. Ball Bearing
#191 017 0
10x26x8

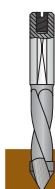
F. Ball Bearing
#191 018 0
1/2x1/8x5/16

G. Ball Bearing
#191 921 0
15x25.4x6

H. Ball Bearing
#191 922 0
15x31.8 x8.5



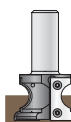
Cutting



Drilling



Routing



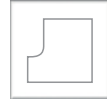
Custom Tooling



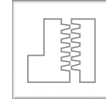
Routing



Grooving & Sizing



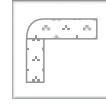
Profiling & Chamfering



Jointing & Rebating



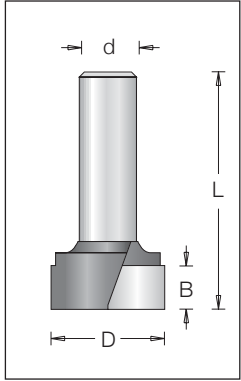
Carving



Corian

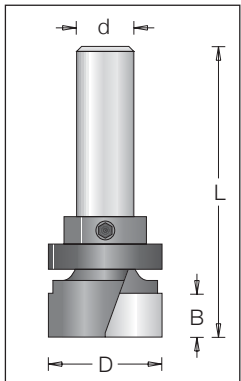
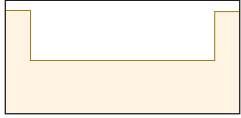


Bottom Cleaning Bit



øD	B	Code No.	L	ød
19.1	11.1	1640 07 3	57.0	6
	11.1	1640 07 9	63.5	12
25.4	11.1	1640 14 9	64.0	12
38.1	16.0	1640 18 9	69.0	12

⚠ 6mm shank can be supplied with 1/4" shank.
12mm shank can be supplied with 1/2" shank.



øD	B	Code No.	L	ød	Ball Bearing
19.1	11.1	1642 07 3	57.0	6	A
	11.1	1642 07 9	63.5	12	B
25.4	11.1	1642 14 9	64.0	12	C
38.1	16.0	1642 18 9	69.0	12	D

⚠ 6mm shank can be supplied with 1/4" shank.
12mm shank can be supplied with 1/2" shank.

Spare Parts:



A.Ball Bearing
#191 014 0
19x6.3x7



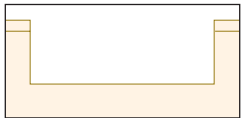
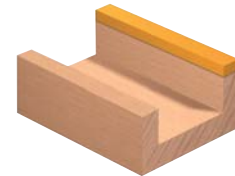
B.Ball Bearing
#191 020 0
19x12.7x4



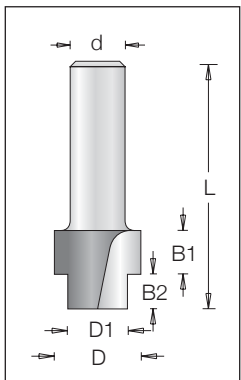
C.Ball Bearing
#191 921 0
15x25.4x6



D.Ball Bearing
#191 922 1
15x38.1x3

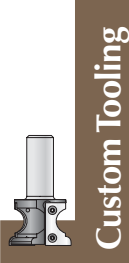
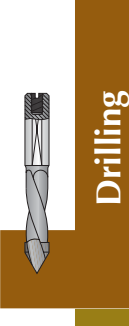
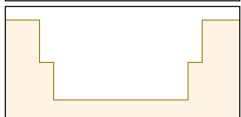
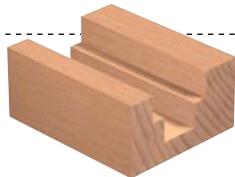


Stepped Rebatg Bit



øD	øD1	Code No.	B1	B2	L	ød
19	9.5	1141 08 3	12.7	6.3	47.6	6
19	12.7	1141 09 3	9.5	6.3	50.8	6
22	14.0	1141 10 9	8.0	9.5	57.0	12

⚠ 6mm shank can be supplied with 1/4" shank.
12mm shank can be supplied with 1/2" shank.

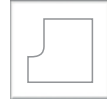




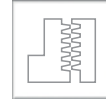
Routing



Grooving & Sizing



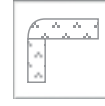
Profiling & Chamfering



Jointing & Rebating

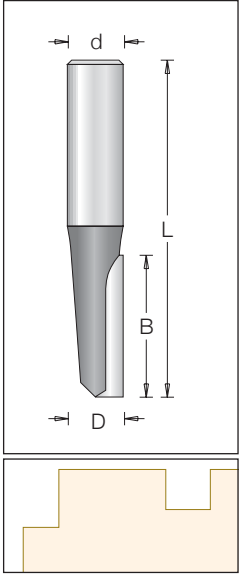


Carving



Corian

Straight Bit - Single Tooth



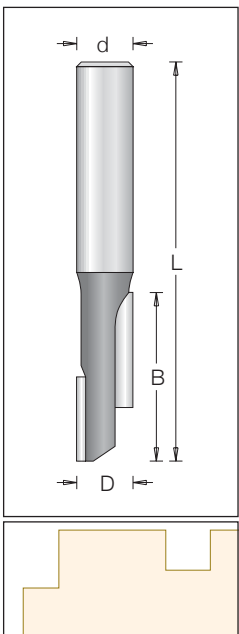
øD	B	Code No.	L	ød
3.0	11.1	1250 02 3 *	51.0	6
3.2	11.1	1250 01 3 *	51.0	6
4.0	11.1	1250 04 3 *	51.0	6
4.8	11.1	1250 07 3 *	51.0	6
6.3	12.7	1250 10 3	51.0	6
	19.1	1250 13 3	51.0	6
	25.4	1250 16 3	57.0	6
7.9	25.4	1250 23 3	57.0	6
12.7	25.4	1250 28 3	54.0	6
15.9	19.1	1250 38 3	49.0	6
19.1	19.1	1250 40 3	47.0	6
6.3	19.1	1250 13 9	65.0	12
	25.4	1250 16 9	68.5	12
7.9	19.1	1250 19 9	63.5	12
	25.4	1250 23 9	71.5	12
9.5	25.4	1250 22 9	70.0	12
	31.8	1250 25 9	76.0	12
	25.4	1250 28 9	63.5	12
12.7	31.8	1250 31 9	73.0	12
	38.1	1250 34 9	79.0	12
	50.8	1250 35 9	108.0	12
15.9	31.8	1250 37 9	73.0	12



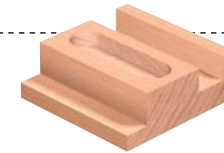
* Solid Carbide

6mm shank can be supplied with 1/4" shank.
12mm shank can be supplied with 1/2" shank.

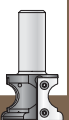
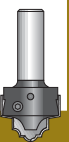
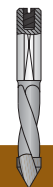
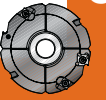
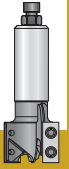
Staggered Straight Bit



øD	B	Code No.	L	ød
12.7	38.1	1260 10 9	79.4	12
	54.0	1260 14 9	108.0	12
16.0	51.0	1260 23 9	103.0	12



Can be supplied with 1/2" shank.

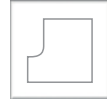




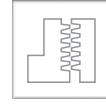
Routing



Grooving & Sizing



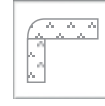
Profiling & Chamfering



Jointing & Rebating

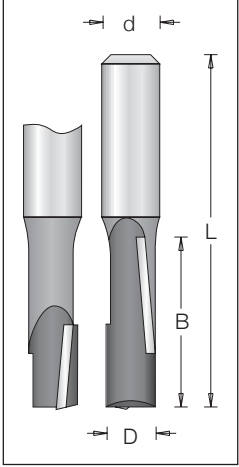


Carving



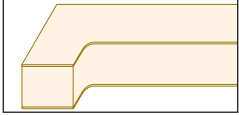
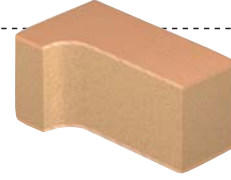
Corian

Staggered Straight Shear Bit

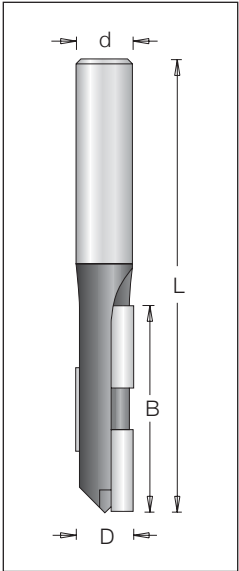


$\varnothing D$	B	Code No.	L	$\varnothing d$
12.7	38.1	1260 10 9s	79	12
	54.0	1260 14 9s	108	12

⚠ Can be supplied with 1/2" shank.

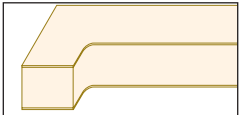
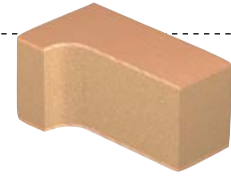


Staggered Straight Bit with Center Tip



$\varnothing D$	B	Code No.	L	$\varnothing d$
14	50.8	1260 330	109.5	14
	50.8	1260 339	109.5	12

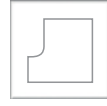
⚠ Can be supplied with 1/2" shank.



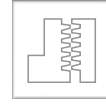
Routing



Grooving & Sizing



Profiling & Chamfering



Jointing & Rebating



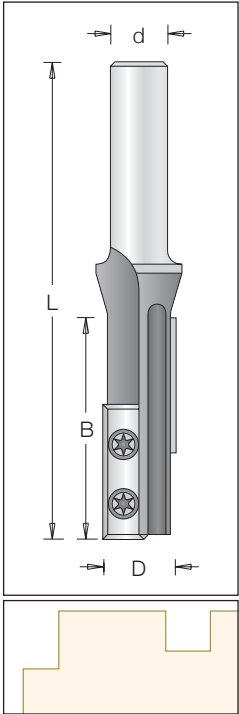
Carving



Corian



Staggered Straight Bit



øD	B	Code No.	L	ød
16	50	107 314 9 *	107	12
18	50	107 318 9	107	12
20	50	107 322 9	107	12
22	50	107 326 9	107	12



⚠ Can be supplied with 1/2" shank.

Spare Parts:



T.C. Blade *
310 793 0
30x9x1.5



Torx screw *
193 354 8
M3.5x4.8



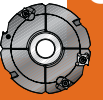
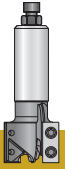
T.C. Blade
310 723 0
30x12x1.5



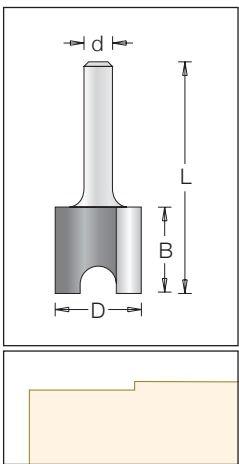
Torx screw
193 148 2
M4xS6



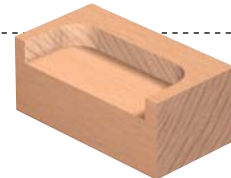
Torx key
194 101 5
T15



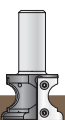
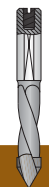
Hinge Mortising Bit



øD	B	Code No.	L	ød
12.7	19.1	1110 01 3	51	6
	19.1	1110 01 5	51	8
15.9	19.1	1110 04 3	51	6
	19.1	1110 04 5	51	8
19.1	19.1	1110 07 3	51	6
	19.1	1110 07 5	51	8
25.4	19.1	1110 10 3	51	6
	19.1	1110 10 5	51	8
31.8	19.1	1110 12 9	58	12
	31.8	1110 13 9	73	12



⚠ 6mm shank can be supplied with 1/4" shank.
12mm shank can be supplied with 1/2" shank.

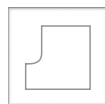




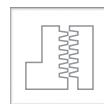
Routing



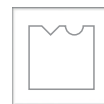
Grooving & Sizing



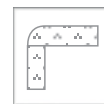
Profiling & Chamfering



Jointing & Rebating

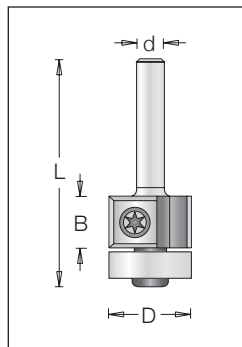


Carving

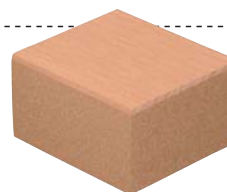


Corian

Flush Trimming Bit



øD	B	Code No.	L	ød
19	12	1019 40 3 *	52	6
	12	1019 40 5 *	57	8
	30	1019 44 3	70	6
	30	1019 44 5	72	8
	30	1019 44 9	78	12
	50	1019 47 9 **	99	12



⚠ 6mm shank can be supplied with 1/4" shank.
12mm shank can be supplied with 1/2" shank.

Spare Parts:



T.C. Blade *
#310 121 2
12x12x1.5



T.C. Blade
#310 123 0
30x12x1.5



T.C. Blade **
#310 126 0
50x12x1.7



Ball Bearing
#191 012 0
6x19x6

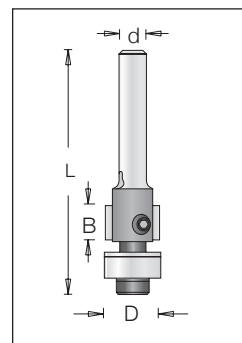


Torx screw
#193 148 2
M - 4x5.6

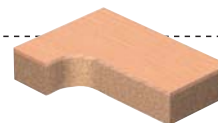


Torx key
#194 101 5
T - 15

Flush Trimming Bit



øD	B	Code No.	L	ød
12.7	8.5	1019 10 3	57	6



⚠ Can be supplied with 1/4" shank.

Spare Parts:



T.C. Blade
#310 150 1
8.5x5.5x1.1



Ball Bearing
#191 007 0
4.7x12.7x5



Allen screw
#193 036 0
M3x5



Allen screw
#193 033 0
M3x6



Allen key
#194 102 0
S1.5

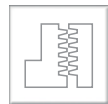
Routing



Grooving & Sizing



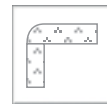
Profiling & Chamfering



Jointing & Rebating



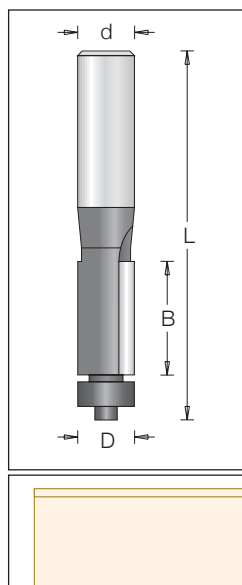
Carving



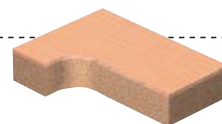
Corian



Flush Trimmer Bit



	øD	B	Code No.	Teeth	L	ød	
9.5	12.7	12.7	1010 01 3	2	56	6.0	A
	12.7	12.7	1010 01 5	2	59	8.0	A
	25.4	25.4	1010 04 3	2	69	6.0	A
	25.4	25.4	1010 04 5	2	72	8.0	A
12.7	12.7	12.7	1010 07 3	2	56	6.0	B
	12.7	12.7	1010 07 5	2	60	8.0	B
	25.4	25.4	1010 10 3	2	67	6.0	B
	25.4	25.4	1010 10 5	2	71	8.0	B
	25.4	25.4	1010 10 6	2	74	9.5	B
	12.7	12.7	1010 07 9	2	71	12.0	B
19.1	25.4	25.4	1010 10 9	2	84	12.0	B
	38.1	38.1	1010 16 9	2	99	12.0	B
	51.0	51.0	1010 19 9	2	108	12.0	B
	25.4	25.4	1014 17 9	2	83	12.0	C
12.7	12.7	12.7	1010 22 3	3	56	6.0	B
	12.7	12.7	1010 22 5	3	59	8.0	B
	25.4	25.4	1010 25 3	3	67	6.0	B
	25.4	25.4	1010 25 5	3	70	8.0	B
	12.7	12.7	1010 22 9	3	71	12.0	B
	25.4	25.4	1010 25 9	3	84	12.0	B
	38.1	38.1	1010 28 9	3	100	12.0	B



⚠ 6mm shank can be supplied with 1/4" shank.
12mm shank can be supplied with 1/2" shank.

Spare Parts:



A. Ball Bearing
#191 004 0
4.7x9.5x3.1

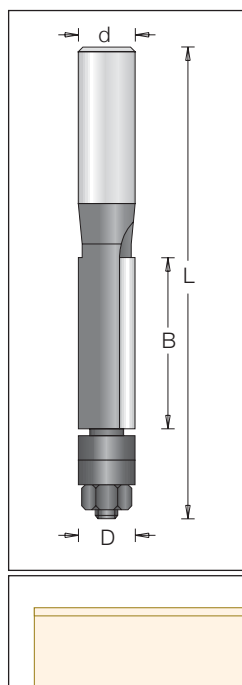


B. Ball Bearing
#191 007 0
4.7x12.7x5

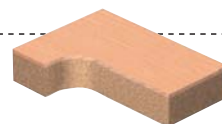


C. Ball Bearing
#191 014 0
6.3x19x7

Flush Trimmer Bit - Double Bearing



	øD	B	Code No.	Teeth	L	ød
12.7	38.1	38.1	1010 17 9	2	103.5	12
	51.0	51.0	1010 20 9	2	116.7	12
	38.1	38.1	1010 30 9	3	103.5	12



⚠ Can be supplied with 1/2" shank.

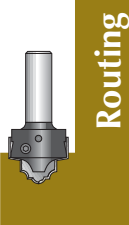
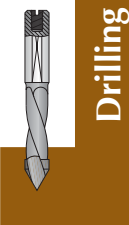
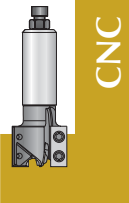
Spare Parts:



Ball Bearing
#191 007 0
4.7x12.7x5



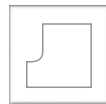
Nut
#198 001 0
NC3/16



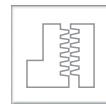
Routing



Grooving & Sizing



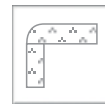
Profiling & Chamfering



Jointing & Rebating



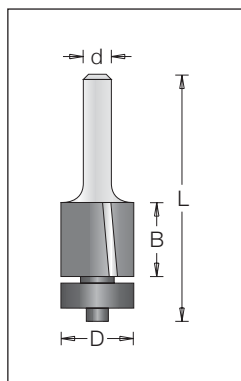
Carving



Corian



Flush Trimmer Bit - Shear Angle



øD	B	Code No.		L	ød	
16.0	16.0	1010 13 3	Down cut	56.0	6	A
	16.0	1010 13 5	Down cut	60.0	8	A
19.1	16.0	1010 15 3	Down cut	61.0	6	B
	16.0	1010 15 5	Down cut	64.0	8	B
	25.4	1010 18 3	Down cut	72.0	6	B
19.1	25.4	1010 18 5	Down cut	75.0	8	B
	38.1	1013 01 9	Up cut	98.4	12	B
	50.8	1013 02 9	Up cut	108.0	12	B



⚠ 6mm shank can be supplied with 1/4" shank.
12mm shank can be supplied with 1/2" shank.

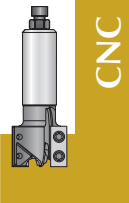
Spare Parts:



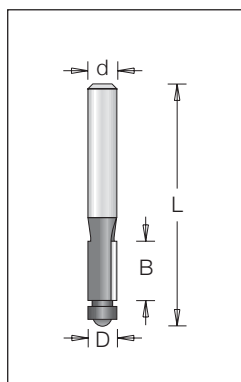
A. Ball Bearing
#191 010 0
5x16x5



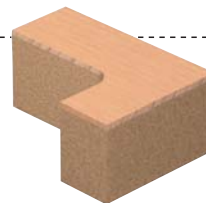
B. Ball Bearing
#191 014 0
6.4x19.05x7.1



Flush Trimmer Bit



øD	B	Code No.	Flutes	L	ød
6.35	12.7	1011 01 3	2	52	6
	25.4	1011 00 3	2	65	6

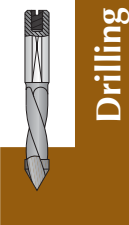


⚠ Can be supplied with 1/4" shank.

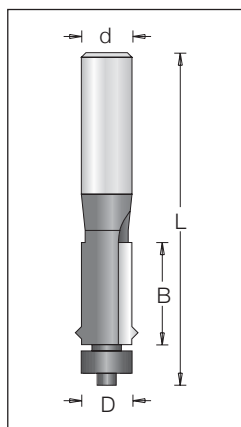
Spare Parts:



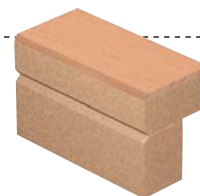
Ball Bearing
#191 002 0
3x6.3x2.8



Flush Trimmer - V Groove Bit



øD	B	Code No.	Flutes	L	ød
12.7	25.4	1010 11 3	2	67	6
	25.4	1010 11 9	2	83	12

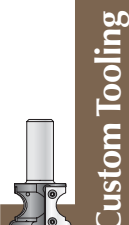
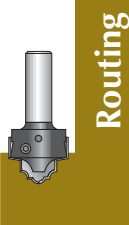
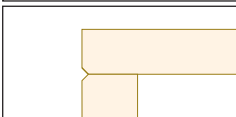


⚠ 6mm shank can be supplied with 1/4" shank.
12mm shank can be supplied with 1/2" shank.

Spare Parts:



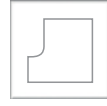
Ball Bearing
#191 007 0
4.7x12.7x5



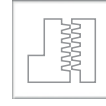
Routing



Grooving & Sizing



Profiling & Chamfering



Jointing & Rebating



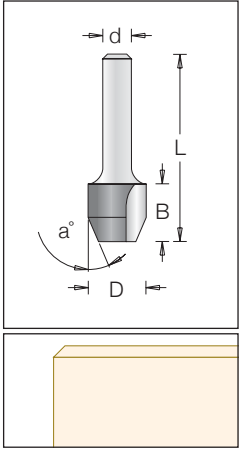
Carving



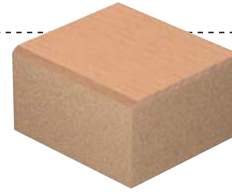
Corian



Combi Trimmer Bit - Flush & Bevel



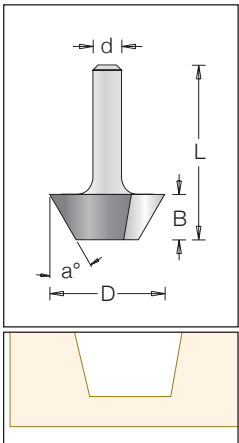
øD	a	B	Code No.	L	ød
8.7	23°	12.7	1100 19 3	41.3	6
9.5	23°	12.7	1100 16 3	41.3	6
12.7	23°	12.7	1100 01 3	41.3	6
	30°	12.7	1100 04 3	41.3	6
	30°	12.7	1100 04 5	44.3	8



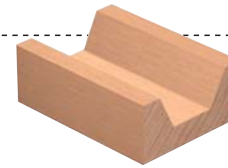
⚠ Can be supplied with 1/4" shank.



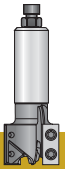
Bevel Bit



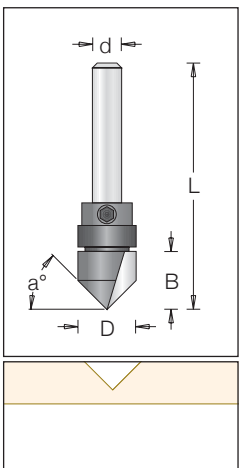
øD	a	B	Code No.	L	ød
12.7	15°	12.7	1030 09 3	51.0	6
22.2	23°	10.0	1030 01 3	38.5	6
	23°	10.0	1030 01 5	42.5	8
25.4	30°	10.0	1030 04 3	38.5	6
	30°	10.0	1030 04 5	42.0	8
24.2	45°	6.3	1030 06 5	38.5	8
34.2	45°	10.0	1030 07 3	38.5	6
	45°	10.0	1030 07 5	42.0	8



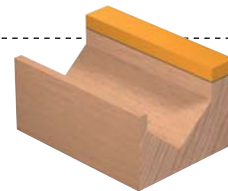
⚠ Can be supplied with 1/4" shank.



V Groove Bit



øD	a	B	Code No.	L	ød
12.7	45°	12.7	1052 10 3	52	6

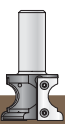
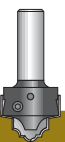
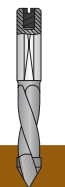
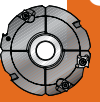


⚠ Can be supplied with 1/4" shank.

Spare Parts:



Ball Bearing
#191 003 0
12.7x3.6x4.7

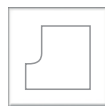




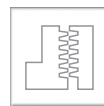
Routing



Grooving & Sizing



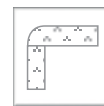
Profiling & Chamfering



Jointing & Rebating

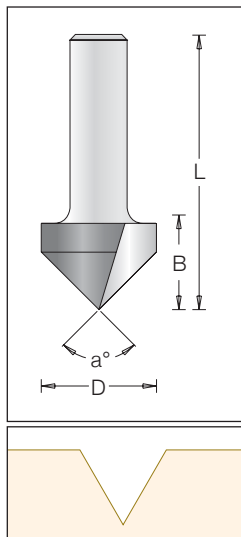


Carving



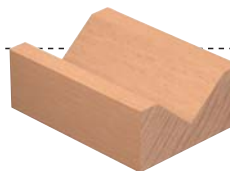
Corian

V Groove Bit

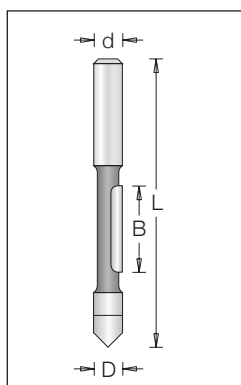


øD	a	B	Code No.	L	ød
9.5	90°	11.0	1050 01 3	42.0	6
	90°	11.0	1050 01 5	45.0	8
12.7	60°	16.0	1050 04 3	44.5	6
	60°	16.0	1050 04 5	47.5	8
	70°	16.0	1050 07 3	44.5	6
	70°	16.0	1050 07 5	47.5	8
	90°	12.7	1050 10 3	41.5	6
	90°	12.7	1050 10 5	44.0	8
16.0	90°	12.7	1050 13 3	41.3	6
	90°	12.7	1050 13 5	45.0	8
19.1	90°	16.0	1050 16 3	45.0	6
	90°	16.0	1050 16 5	48.0	8
22.2	90°	19.1	1050 17 3	48.0	6
	90°	19.1	1050 17 5	52.0	6
25.4	90°	19.1	1050 19 3	48.0	6
	90°	19.1	1050 19 5	51.0	8
9.5	90°	11.0	1050 01 9	52.0	12
12.7	90°	12.7	1050 10 9	55.0	12
16.0	90°	12.7	1050 13 9	51.0	12
19.1	90°	16.0	1050 16 9	54.0	12
25.4	90°	19.1	1050 19 9	57.0	12
31.8	90°	25.4	1050 22 9	63.5	12
38.1	90°	31.8	1050 25 9	70.0	12
51.0	90°	44.5	1050 31 9	83.0	12

⚠ 6mm shank can be supplied with 1/4" shank.
12mm shank can be supplied with 1/2" shank.



Panel Pilot Bit



øD	B	Code No.	L	ød
6.3	19.1	1150 01 3 *	63.5	6.0
	19.1	1150 01 5 *	63.5	8.0
9.5	25.4	1150 04 6 *	76.2	9.5
12.7	30.1	1150 07 9 *	88.9	12.0
6.3	19.1	1153 01 5 **	63.5	8.0
9.5	25.4	1153 04 6 **	76.2	9.5
12.7	30.1	1153 07 9 **	88.9	12.0

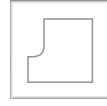
⚠ * Single Fluted
** Double Fluted
6mm shank can be supplied with 1/4" shank.
12mm shank can be supplied with 1/2" shank.



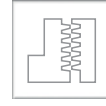
Routing



Grooving & Sizing



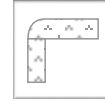
Profiling & Chamfering



Jointing & Rebating



Carving



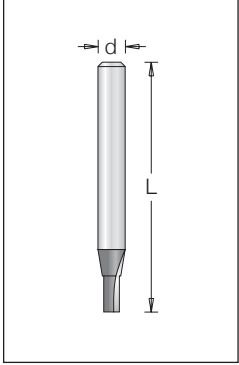
Corian



Index

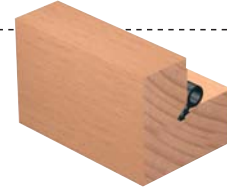
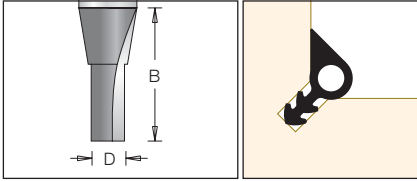


Seal Straight Bit



øD	B	Code No.	L	ød
3	8	1078 02 3	55	6
	8	1078 02 5	48	8

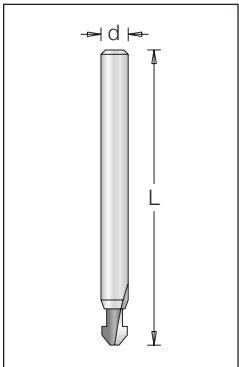
⚠ Solid Carbide
Can be supplied with 1/4" shank.



Sawing

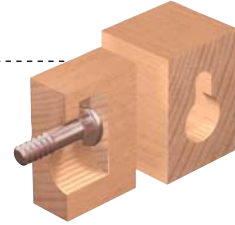
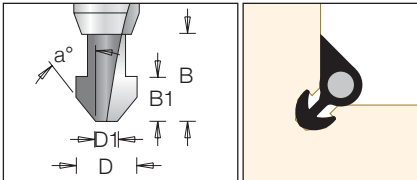


Seal Profile Bit

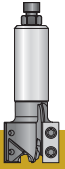


øD	øD1	Code No.	B	B1	a	L	ød
5.5	2	1041 01 3	8	4	38°	65	6

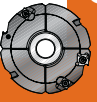
⚠ Solid Carbide
Can be supplied with 1/4" shank.



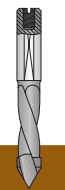
CNC



Cutting



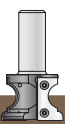
Drilling



Routing



Custom Tooling

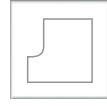




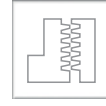
Routing



Grooving & Sizing



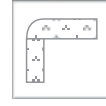
Profiling & Chamfering



Jointing & Rebating

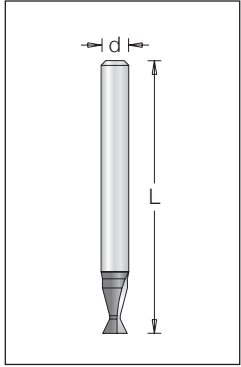


Carving



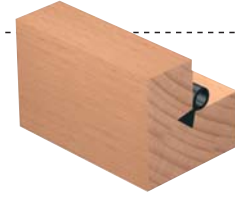
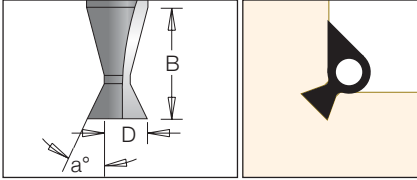
Corian

Dovetail Seal Bit

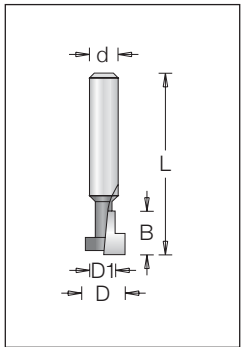


$\varnothing D$	a	B	Code No.	L	$\varnothing d$
5.1	25°	8	1043 00 3	60	6

Solid Carbide



Keyhole Slot Cutter - Single Fluted



$\varnothing D$	$\varnothing D1$	B	Code No.	L	$\varnothing d$
9.7	5	9.5	1141 01 3	40.0	6
	5	9.5	1141 01 5	47.0	8
12.7	8	9.5	1141 03 3	38.1	6
	8	9.5	1141 03 5	38.1	8

